

Nursing Evaluation of Dental Trauma and Emergencies

Jennifer Hobbs, DDS

Dentist

Rutgers University Behavioral Health Care



**NATIONAL COMMISSION
ON CORRECTIONAL HEALTH CARE**

Disclosure and Disclaimer

I do not have any relevant financial relationships with any commercial interests

- This informational presentation was developed by independent experts. The information provided in this presentation is not the official position or recommendation of NCCHC but rather expert opinion. This information is not intended to be appropriate for every clinical situation nor does it replace clinical judgment.
- NCCHC does not endorse or recommend any products or services mentioned



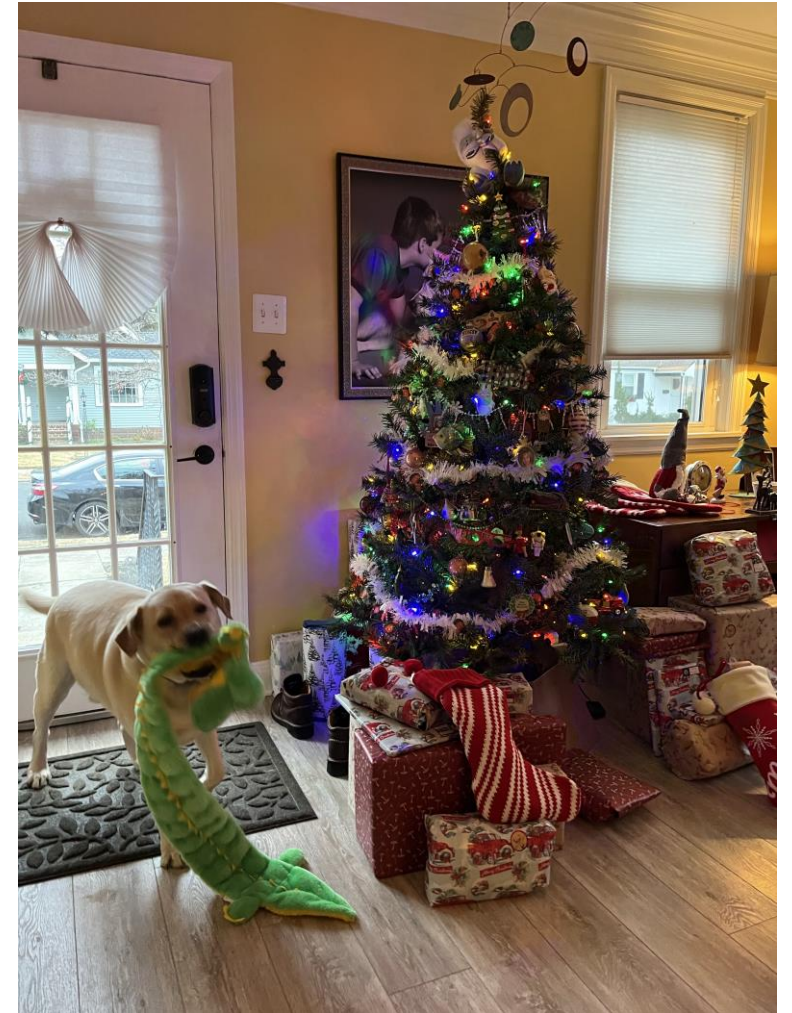
**NATIONAL COMMISSION
ON CORRECTIONAL HEALTH CARE**

Educational Objectives

- Review clinical presentation of common dental emergencies seen in correctional setting.
- Delineate situations when the patient can wait to see the dentist and those that require a trip to the ER
- Demonstrate management of common dental emergencies



WHY THIS TOPIC???



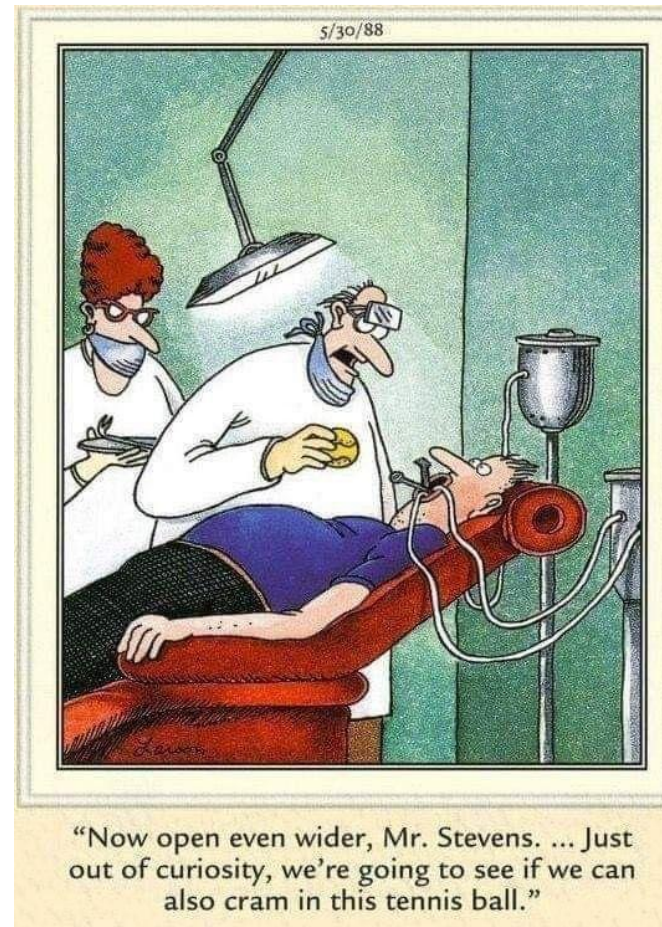
**NATIONAL COMMISSION
ON CORRECTIONAL HEALTH CARE**

Correctional nurses are often called upon to evaluate and triage dental emergencies. We will review common dental emergencies and outline appropriate management of these events, with particular attention to signs and symptoms of jaw fracture and recognition of fascial space infections of the head and neck region. We will also distinguish between true emergencies requiring immediate treatment and urgent issues that can wait until normal clinic session.



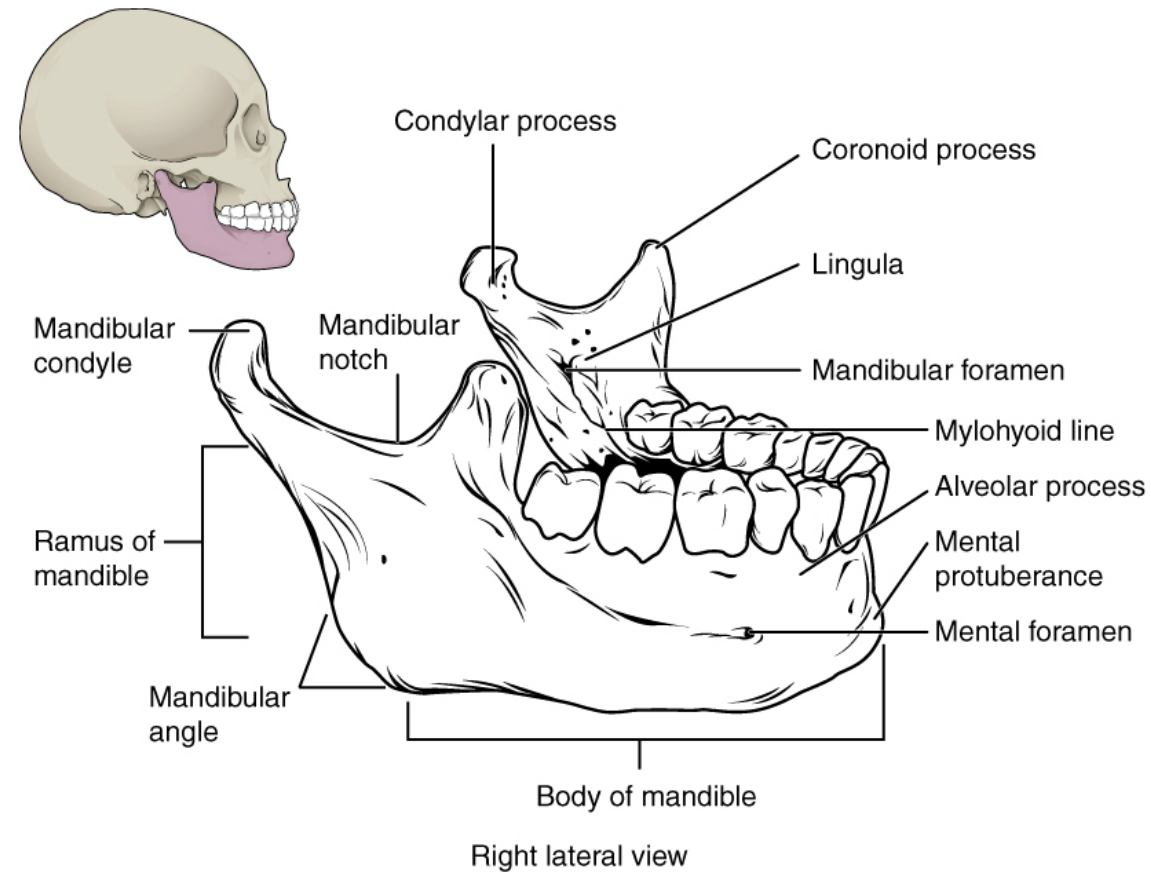
Common Dental Emergencies

- Trauma
- Infection
- Pain
- Post-op bleeding



NATIONAL COMMISSION
ON CORRECTIONAL HEALTH CARE

Case courtesy of OpenStax College, Radiopaedia.org, rID: 42758



Caption

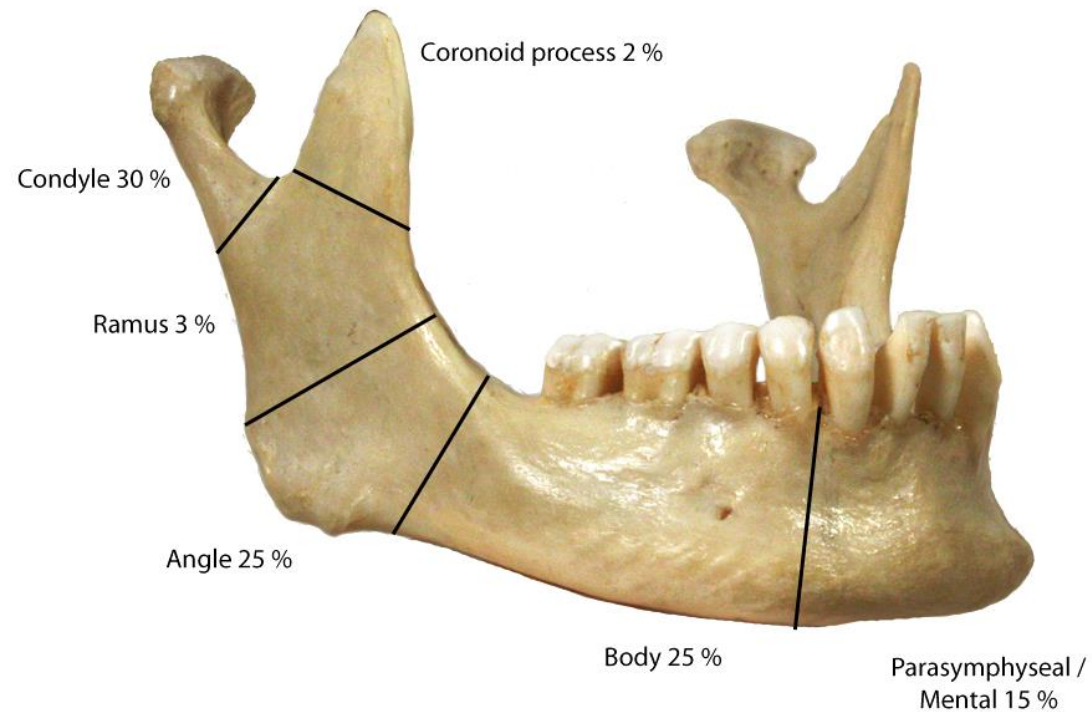


NATIONAL COMMISSION
ON CORRECTIONAL HEALTH CARE

Case courtesy of Assoc Prof Frank Gaillard, Radiopaedia.org. From the case rID: 36205

Mandibular fractures

Frequency by location



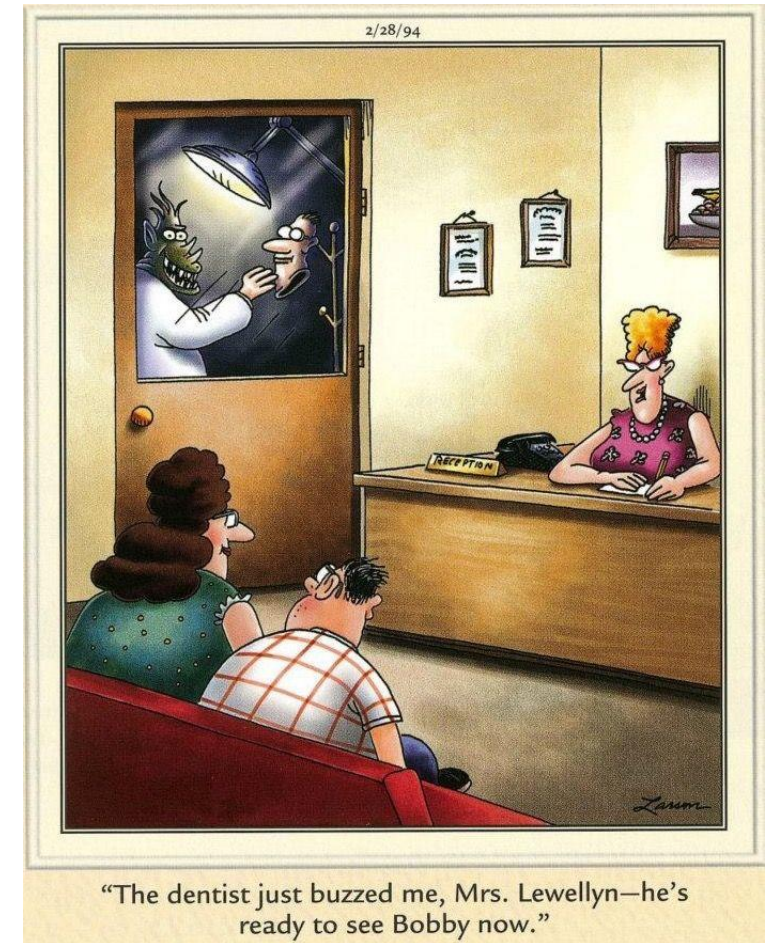
Caption



NATIONAL COMMISSION
ON CORRECTIONAL HEALTH CARE

INJURIES ASSOCIATED WITH JAW FRACTURE

- HEAD INJURY
- HEAD AND NECK LACERATION
- MIDFACE FRACTURES
- OCULAR INJURIES
- NASAL FRACTURES
- CERVICAL SPINE FRACTURES



**NATIONAL COMMISSION
ON CORRECTIONAL HEALTH CARE**

Signs and Symptoms of Jaw Fracture

- Pain
- Facial Asymmetry or deformity
- Bruising
- Difficulty speaking
- Numbness of lip and chin
- Limited opening or deviation on opening
- Loose teeth or malocclusion
- Bleeding from mouth
- Sublingual hematoma



Malocclusion.Step Defect.Gingival laceration.

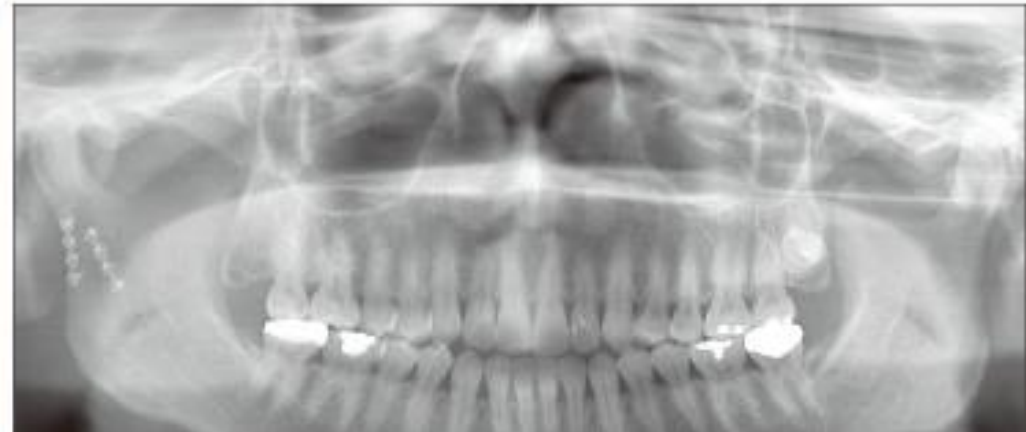


Caption



**NATIONAL COMMISSION
ON CORRECTIONAL HEALTH CARE**

MALOCCLUSION.STEP DEFECT.



Caption



**NATIONAL COMMISSION
ON CORRECTIONAL HEALTH CARE**

MALOCCLUSION.STEP DEFECT.GINGIVAL BLEEDING.



Caption



NATIONAL COMMISSION
ON CORRECTIONAL HEALTH CARE

VERTICAL GINGIVAL LACERATION.



Caption



**NATIONAL COMMISSION
ON CORRECTIONAL HEALTH CARE**

SUBLINGUAL HEMATOMA



Caption



**NATIONAL COMMISSION
ON CORRECTIONAL HEALTH CARE**

DENTAL INFECTION: SIGNS AND SYMPTOMS

- THROBBING PAIN
- PAIN WITH PRESSURE OR BITING
- PAIN WITH HOT LIQUIDS
- SWELLING
- TENDER OR SWOLLEN LYMPH NODES
- FEVER
- DRAINAGE



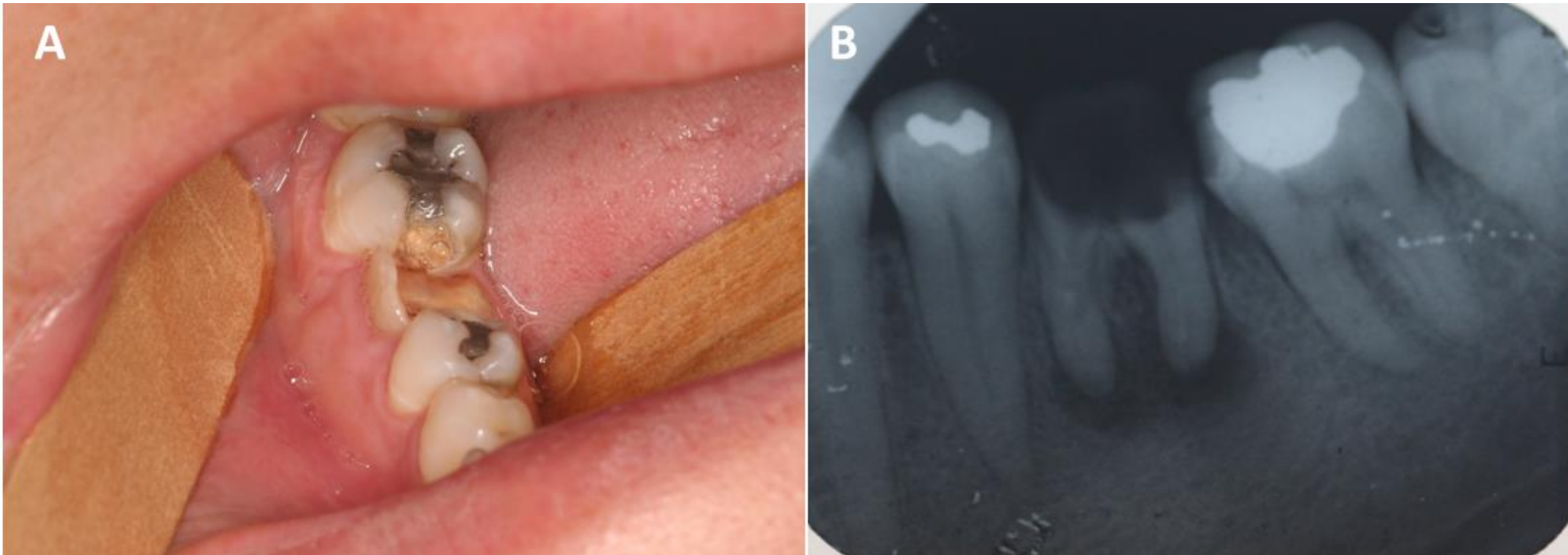
**NATIONAL COMMISSION
ON CORRECTIONAL HEALTH CARE**

PARULIS



**NATIONAL COMMISSION
ON CORRECTIONAL HEALTH CARE**

DENTAL INFECTION

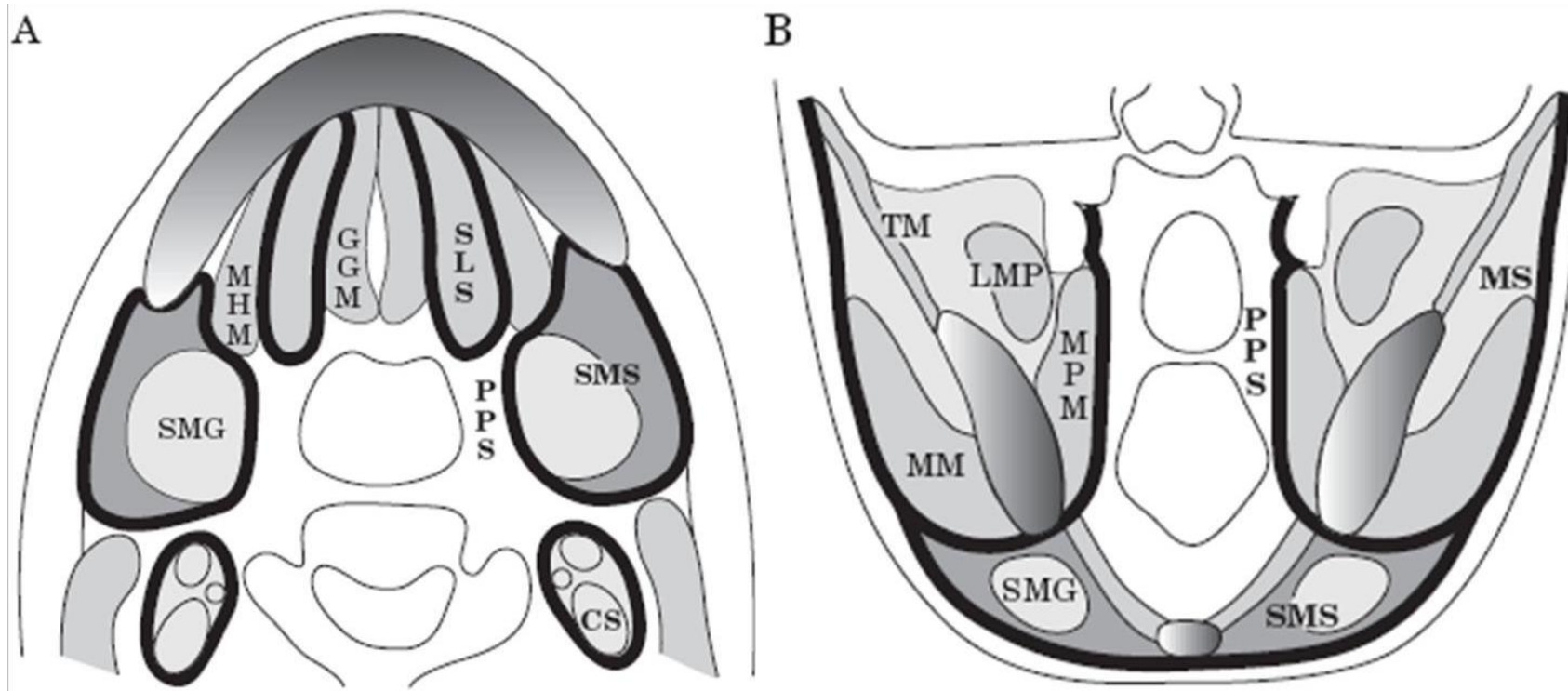


Caption



**NATIONAL COMMISSION
ON CORRECTIONAL HEALTH CARE**

FASCIAL SPACE INFECTION



Caption



**NATIONAL COMMISSION
ON CORRECTIONAL HEALTH CARE**

DOUBLE TONGUE APPEARANCE



Caption



**NATIONAL COMMISSION
ON CORRECTIONAL HEALTH CARE**

Rocha, F. S. , Batista, J. D. , Silva, C. J. , Júnior, R. B. , & Raposo, L. H. A. (2015). Considerations for the Spread of Odontogenic Infe



Caption



**NATIONAL COMMISSION
ON CORRECTIONAL HEALTH CARE**

LUDWIGS ANGINA



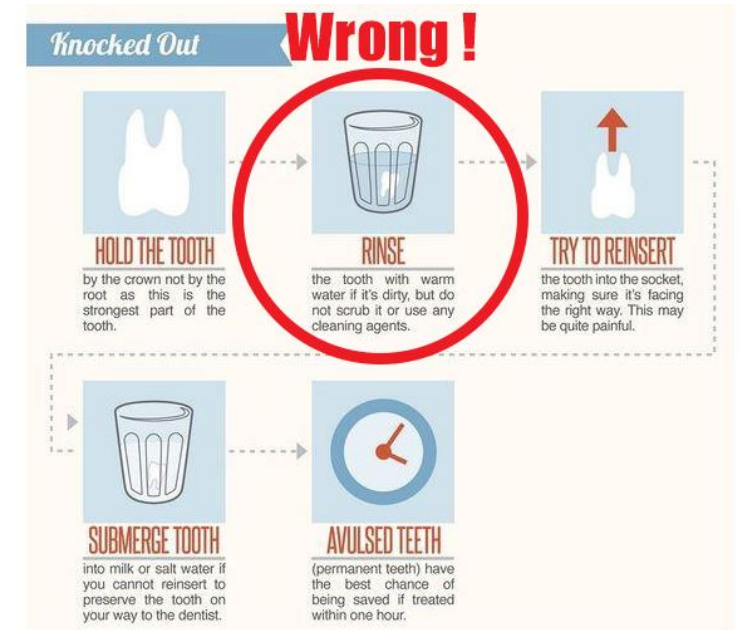
Caption



**NATIONAL COMMISSION
ON CORRECTIONAL HEALTH CARE**

ROUTINE DENTAL EMERGENCIES

- TOOTH AVULSION
- POST-OPERATIVE BLEEDING
- SOFT TISSUE ULCERATIONS LESIONS



**NATIONAL COMMISSION
ON CORRECTIONAL HEALTH CARE**



**NATIONAL COMMISSION
ON CORRECTIONAL HEALTH CARE**

References

- Yuen HW, Hohman MH, Mazzini T. Mandible Fracture. [updated 2021 August 26]. In: StatPearls [internet]. TreasureIsland(FI):StatPearls Publishing; 2022 January.
- Bains KB, Ali AW, Padaki P. Practice Review: Patients Presenting with Symptoms of Odontogenic Infection. The Journal of Urgent Care Medicine. 2022. Available at: <http://www.jumc.com>
- Rocha FS, Batista JD, Silva CJ, Junior RB, Raposa LHA. “Considerations for the Spread of Odontogenic Infections- Diagnosis and Treatment.” A Textbook of Advanced Oral and Maxillofacial Surgery Volume 2. Edited by Motamedi, MTK. IntechOpen. 2015. 10.57721/58687.

